

# Brampton

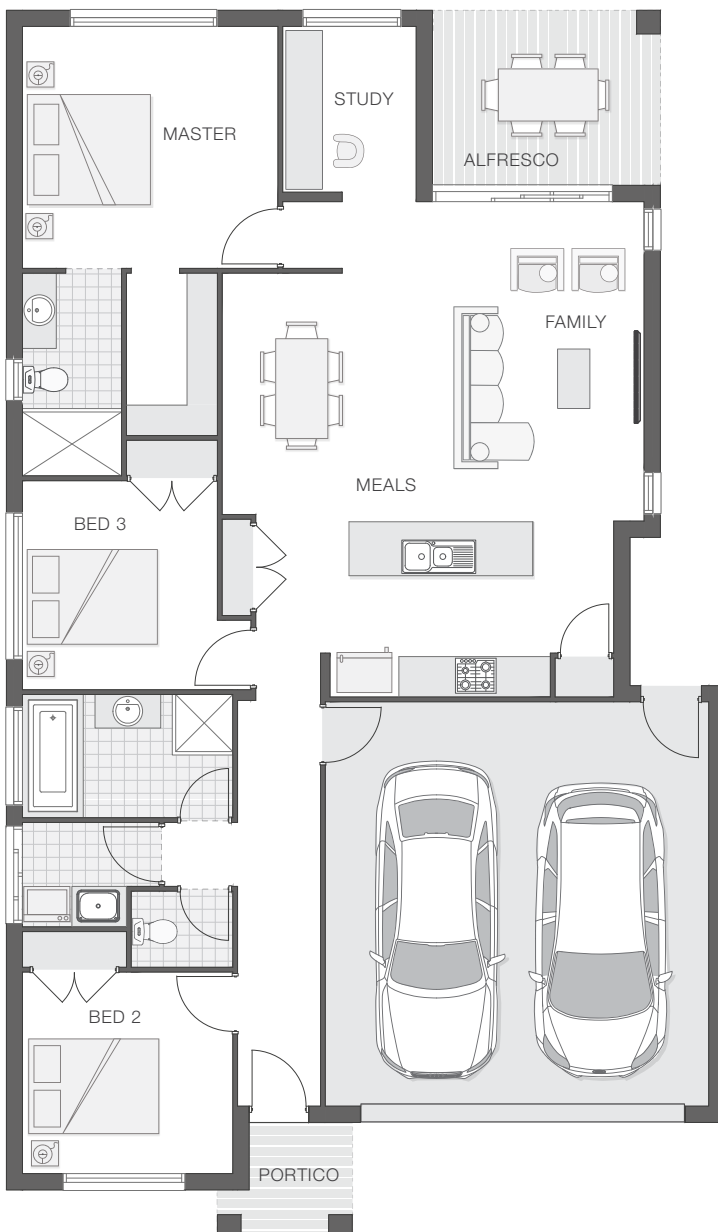
STANDARD DESIGN | 172.0m<sup>2</sup> (18.5sq)



3  2  2 

The Brampton home design is clever, comfortable and classy. The open plan design lends to interactive family living with the open plan living, dining and alfresco entertaining space, while the bedrooms all achieve good separation and privacy.

The master retreat has a well-appointed ensuite and walk-in-robe and is generous in size. The study or home office is versatile and conveniently located alongside the main living zone. This home offers the best in style and comfort for the smaller family.



## KEY DIMENSIONS

Minimum Lot Width	12.5m
Length	18.2m
Width	10.7m

## ROOM DIMENSIONS (m)

Meals	2.9 x 3.6
Family	3.4 x 4.8
Master Bedroom	3.8 x 3.6
Bedroom 2	3.1 x 3.0
Bedroom 3	2.9 x 3.1
Study	2.0 x 2.5
Alfresco	3.4 X 2.6

## FLOOR AREAS (m<sup>2</sup>)

Indoor Living	122.8
Alfresco	8.8
Garage	37.3
Portico	3.1

# Available facade options for:

BRAMPTON HOME DESIGN



ARDEN



BEXLEY



BYRON



HAVEN



KARIN



TAYLOR

This work is exclusively owned by AB Aust IP Pty Ltd (ACN 163 575 077) and cannot be reproduced or copied wholly or in part, in any form without the permission of AB Aust IP Pty Ltd. Plans and designs depicted may change with facade selection. Facade render is indicative and may change with home design. All drawings and images are for illustrative purposes only and rounding has been used. Any prices in this document include GST, relate only to the base home, do not include the supply of items such as landscaping and swimming pools and are subject to change. Minimum lot width is indicative only and is subject to local council regulations and setbacks, buyers should seek confirmation from their local council prior to making any decisions regarding home design on specific lots.

For more details on pricing, home and land packages in your area, inclusions and current offers, please talk to a consultant at one of our many display homes or visit our website, [adenbrookhomes.com.au](http://adenbrookhomes.com.au).