

adenbrookhomes

*Write* **YOUR  
NEXT CHAPTER**



**BUILD  
WITH MORE**

THE RIGHT START



## More Inclusions

### Kitchen Upgrades

- + 20mm stone benchtop
- + Dishwasher
- + Soft close drawers and doors
- + 900 Freestanding Cooker

### Bathroom & Ensuite Upgrades

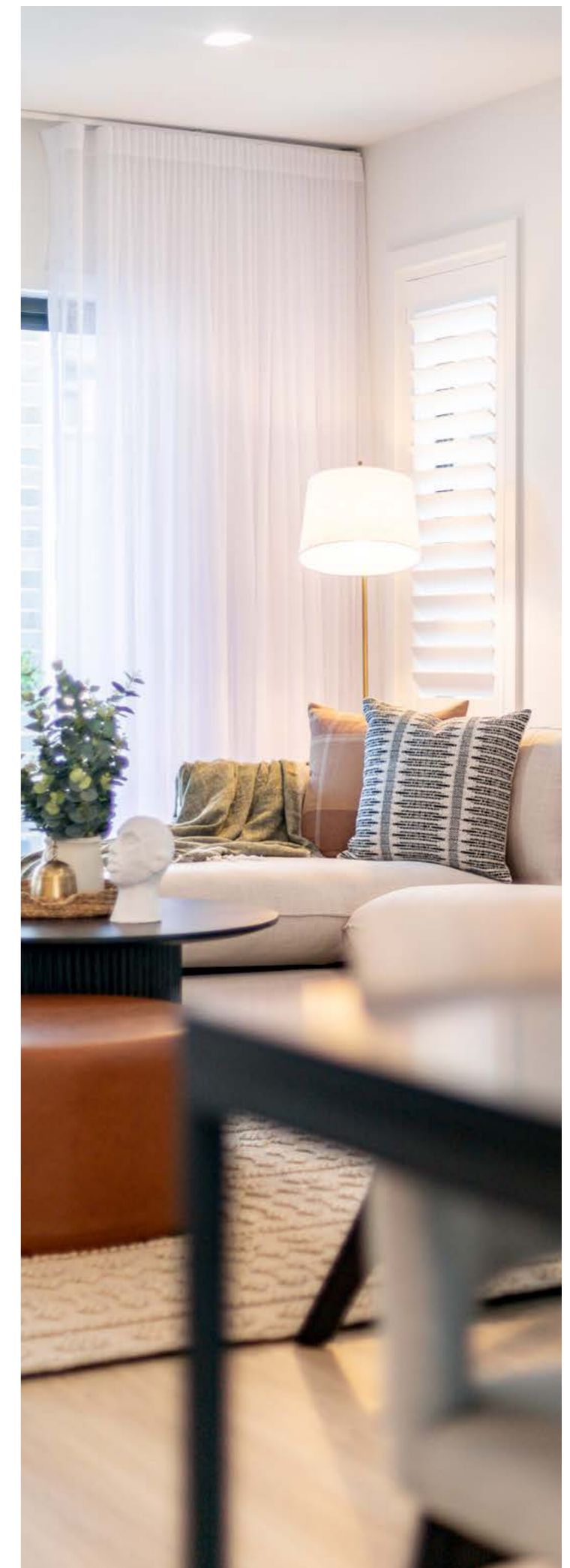
- + 20mm stone benchtop
- + Shower niche to ensuite and main bathroom
- + Soft Close doors

### Electrical Upgrades

- + Downlights
- + NBN provision
- + Clipsal Iconic Ultramodern Range Switch Gear

### External Upgrades

- + 2570 Ceiling Height (ground floor only)
- + Treated Pine Frame
- + R2.0 Walls and R4.0 Ceiling Insulation
- + Wall Sisalation to external wall frames
- + Off-white brick mortar
- + Fibremesh Flyscreens





20mm Stone Benchtop and Soft close doors



Westinghouse 900mm Freestanding Cooker WFE915SD

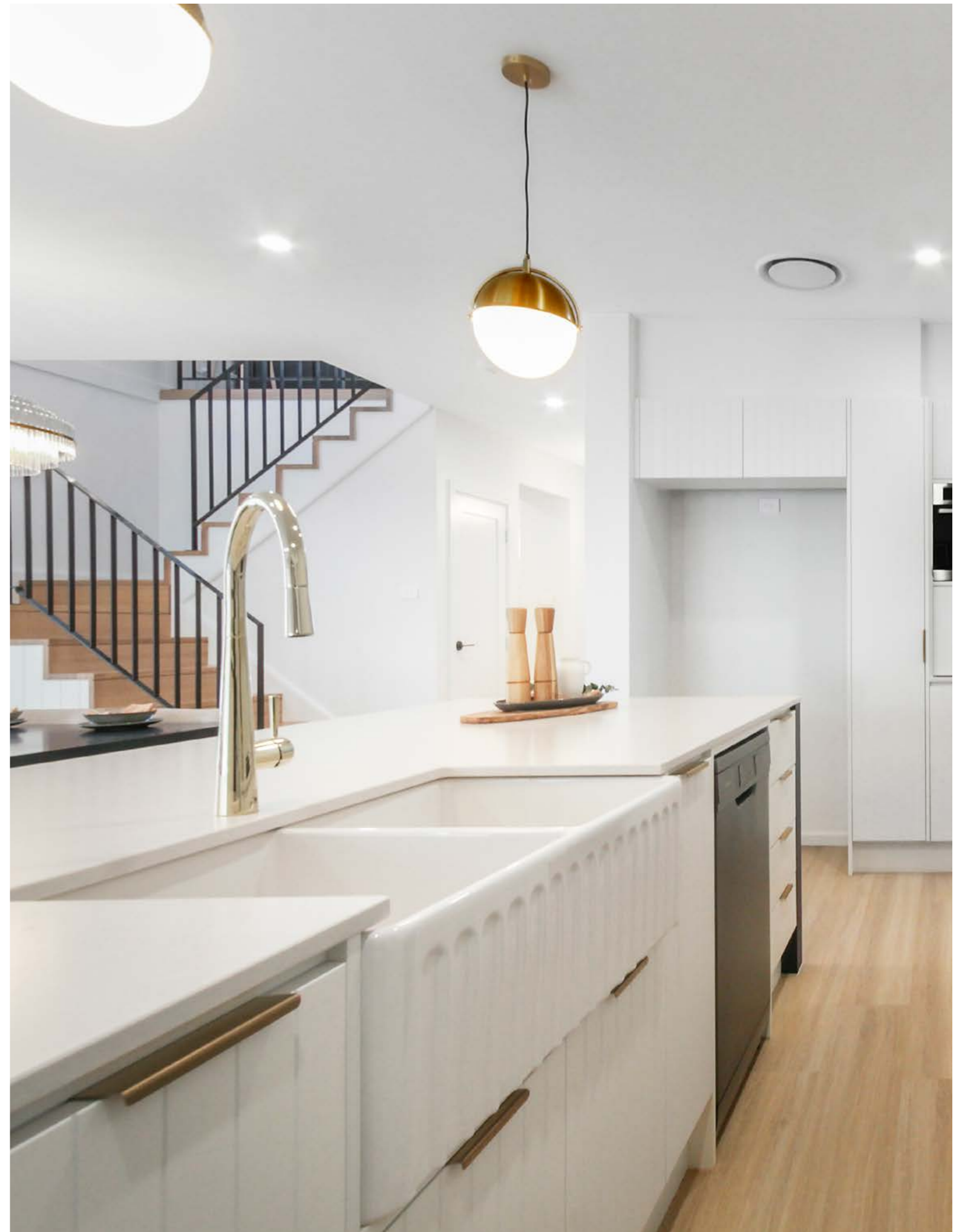


Shower Niche to Ensuite and Main Bathroom



Downlights

20mm Stone Benchttop



Stone benchttop with Soft close doors and drawers

Dishwasher WSF6606XA



**CLIPSAL**  
ELECTRICAL ACCESSORIES

Laminex®

*Gainsborough*  
ENTER WITH STYLE

 Westinghouse

Caroma

 silestone®  
Designed by COSENTINO

Mid North Coast | Matto Luke Corp Pty Ltd | Licence No. 215 259 C | ABN: 65 131 853 088

\*Service costs based on a building lot of up to 600sqm with a 18m frontage and a building set-back up to 4.5m. Display home items such as; built-in furniture, display furniture, drapes, frieze and feature tiles, wall paper, feature painted walls, timber floors, light fittings, 12 volt light system, air conditioning, spa bath, dishwasher, pergolas, paving, landscaping, pools, retaining walls, external concrete and fencing are not included. E&OE. Any items unavailable or superseded at time of ordering or construction may be replaced with a product of equal/lesser value.  
\*\*Images are for illustrative purposes and are not intended to be an actual representation of products within this offer.

adenbrookhomes

adenbrookhomes.com.au  
1300 086 272