

Capestone

OPTION A | 244.8m² (26.3sq)



The Capestone A home design is the perfect balance between entertaining and relaxation. The lower level offers multiple entertainment zones including an alfresco and indoor dining area and a separate media room. The upper level features the master retreat with ensuite and walk-in-robe creating a private sanctuary away from the main living area of the home. Also on the upper floor are the other bedrooms and children's retreat, ensuring there is room for the entire family.

KEY DIMENSIONS

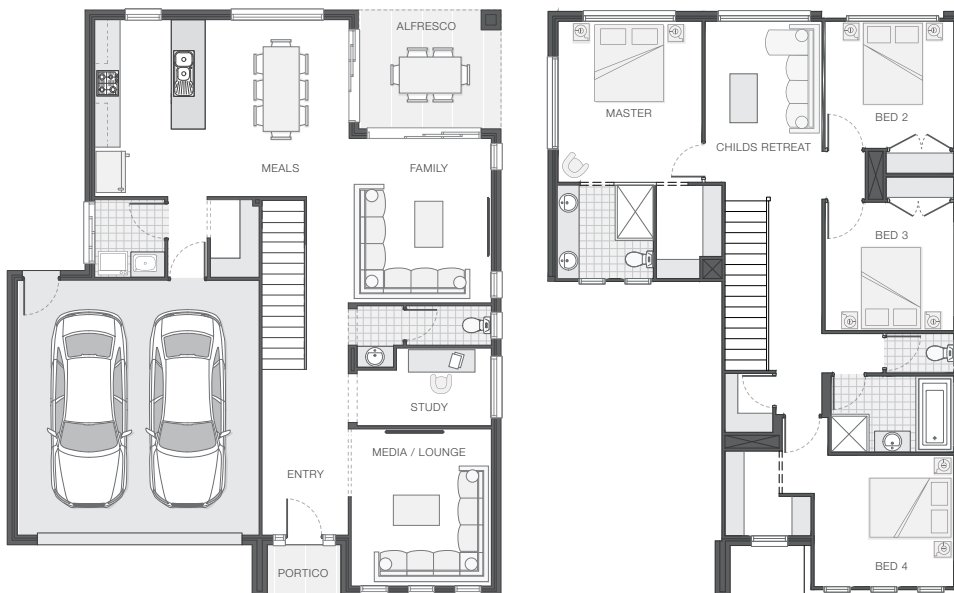
Minimum Lot Width	14.0m
Length	13.8m
Width	11.6m

ROOM DIMENSIONS (m)

Meals	3.4 x 4.2
Family	3.4 x 3.9
Master Bedroom	3.4 x 3.8
Bedroom 2	3.3 x 3.1
Bedroom 3	3.0 x 3.0
Bedroom 4	3.0 x 3.0
Study	3.2 x 1.8
Media/Lounge	3.3 x 3.7
Child's Retreat	2.7 x 3.1
Alfresco	3.3 x 2.8

FLOOR AREAS (m²)

Lower Living	93.1
Upper Living	102.4
Alfresco	9.4
Garage	37.3
Portico	2.5



adenbrook
homes

Available facade options for:

CAPESTONE, HADLEY, KERWIN, MERIDIAN, PATERSON, RICHMOND HOME DESIGNS



BENSON



BROOKLYN



HATTON



MARINA



MONTERAY



MORTON



OAKLEY

This work is exclusively owned by AB Aust IP Pty Ltd (ACN 163 575 077) and cannot be reproduced or copied wholly or in part, in any form without the permission of AB Aust IP Pty Ltd. Plans and designs depicted may change with facade selection. Facade render is indicative and may change with home design. All drawings and images are for illustrative purposes only and rounding has been used. Any prices in this document include GST, relate only to the base home, do not include the supply of items such as landscaping and swimming pools and are subject to change. Minimum lot width is indicative only and is subject to local council regulations and setbacks, buyers should seek confirmation from their local council prior to making any decisions regarding home design on specific lots.

For more details on pricing, home and land packages in your area, inclusions and current offers, please talk to a consultant at one of our many display homes or visit our website, adenbrookhomes.com.au.