

Dawson

STANDARD DESIGN | 141.8m² (15.3sq)

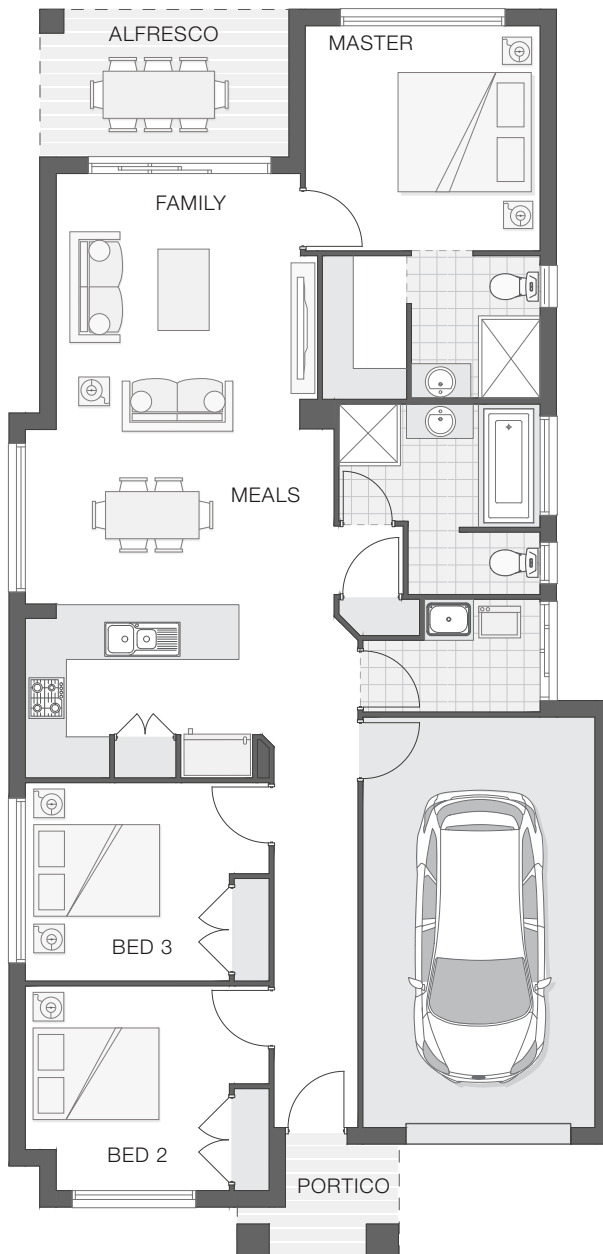


3 2 1

The Dawson home design is contemporary and intended to accommodate a small lot, yet still deliver on space, featuring a clever layout that is ideal for the growing family.

The master retreat occupies the rear of the home alongside the alfresco dining space which flows through the open plan family, meals and kitchen zones then onto the additional bedrooms.

The slim design ensures comfort while providing functionality for entertaining and family living.



KEY DIMENSIONS

Minimum Lot Width	10.0m
Length	18.2m
Width	8.8m

ROOM DIMENSIONS (m)

Meals	3.7 x 2.7
Family	3.6 x 3.7
Master Bedroom	3.5 x 3.3
Bedroom 2	3.0 x 3.0
Bedroom 3	3.0 x 2.9
Alfresco	3.6 x 2.2

FLOOR AREAS (m²)

Indoor Living	107.9
Alfresco	7.9
Garage	22.8
Portico	3.2



Available facade options for:

DAWSON HOME DESIGNS



ARDEN



BEXLEY



BYRON



HAVEN



KARIN



TAYLOR

This work is exclusively owned by AB Aust IP Pty Ltd (ACN 163 575 077) and cannot be reproduced or copied wholly or in part, in any form without the permission of AB Aust IP Pty Ltd. Plans and designs depicted may change with facade selection. Facade render is indicative and may change with home design. All drawings and images are for illustrative purposes only and rounding has been used. Any prices in this document include GST, relate only to the base home, do not include the supply of items such as landscaping and swimming pools and are subject to change. Minimum lot width is indicative only and is subject to local council regulations and setbacks, buyers should seek confirmation from their local council prior to making any decisions regarding home design on specific lots.

For more details on pricing, home and land packages in your area, inclusions and current offers, please talk to a consultant at one of our many display homes or visit our website, adenbrookhomes.com.au.