

Fraser

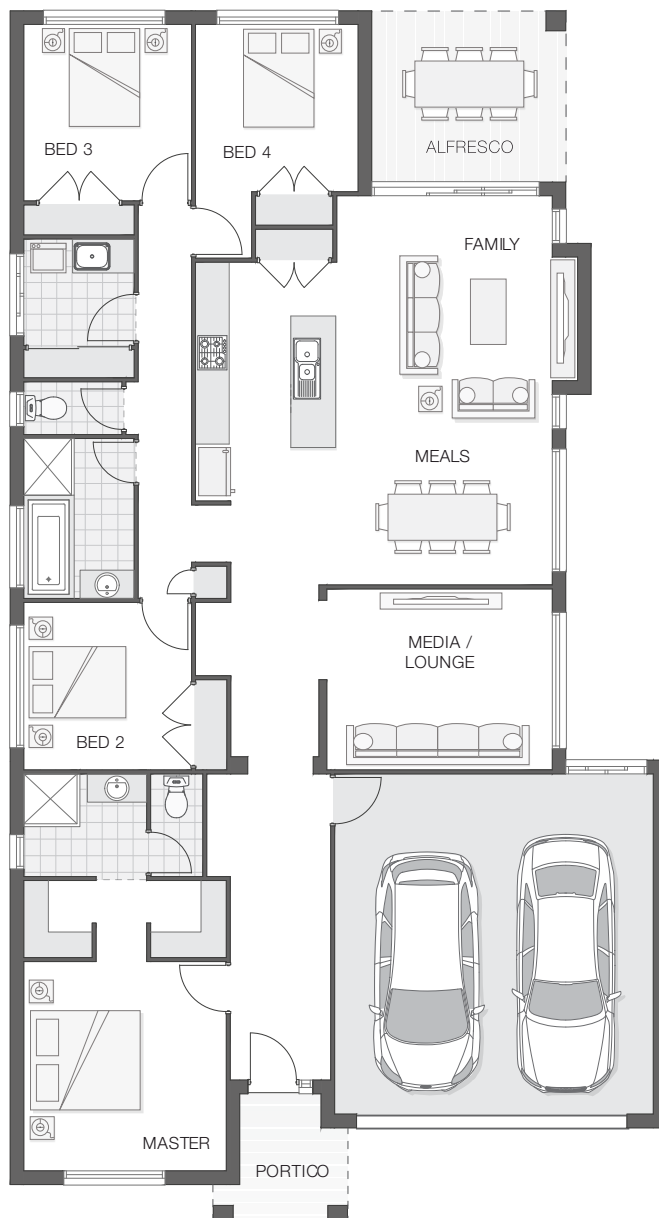
STANDARD DESIGN | 215.7m² (23.2sq)



The Fraser home design is both intelligent and practical in layout and features.

The deliberate placement of separate living and entertainment zones allows space for a touch of luxury in the form of a secluded master retreat with ensuite and his and hers walk-in-robe, while indoor and outdoor living flows effortlessly throughout the home.

With a large dedicated media room this home has certainly been designed with the modern Australian family in mind.



KEY DIMENSIONS

Minimum Lot Width	14.0m
Length	21.4m
Width	11.7m

ROOM DIMENSIONS (m)

Meals	3.8 x 2.6
Family	3.9 x 4.3
Master Bedroom	3.6 x 3.7
Bedroom 2	3.0 x 3.0
Bedroom 3	3.0 x 3.1
Bedroom 4	2.9 x 3.0
Media/Lounge	4.0 x 3.2
Alfresco	3.5 x 3.0

FLOOR AREAS (m²)

Indoor Living	163.2
Alfresco	10.4
Garage	37.6
Portico	4.5



Available facade options for:

FRASER HOME DESIGNS



This work is exclusively owned by AB Aust IP Pty Ltd (ACN 163 575 077) and cannot be reproduced or copied wholly or in part, in any form without the permission of AB Aust IP Pty Ltd. Plans and designs depicted may change with facade selection. Facade render is indicative and may change with home design. All drawings and images are for illustrative purposes only and rounding has been used. Any prices in this document include GST, relate only to the base home, do not include the supply of items such as landscaping and swimming pools and are subject to change. Minimum lot width is indicative only and is subject to local council regulations and setbacks, buyers should seek confirmation from their local council prior to making any decisions regarding home design on specific lots.

For more details on pricing, home and land packages in your area, inclusions and current offers, please talk to a consultant at one of our many display homes or visit our website, adenbrookhomes.com.au.

