

# Hadley

STANDARD DESIGN | 298.2m<sup>2</sup> (32.1sq)



The Hadley home design leaves absolutely nothing to be desired, perfectly balancing entertaining, living and study zones in generous proportions. The lower level boasts an alfresco, plentiful kitchen, family and living zone for all the family moments yet cleverly includes quiet zones for study and time alone. The upper level comprises of a spacious master parent's retreat with ensuite and walk-in-robe, additional bedrooms and a retreat creating the ideal space to escape and unwind.

## KEY DIMENSIONS

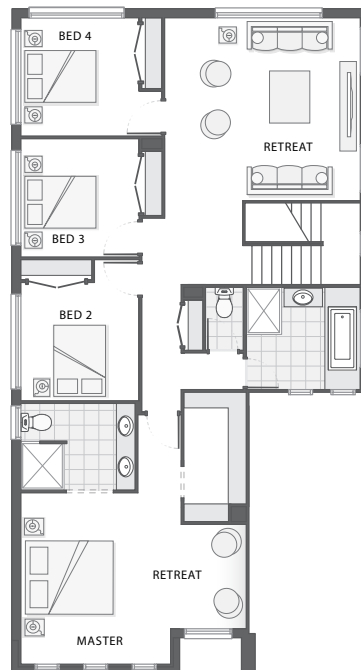
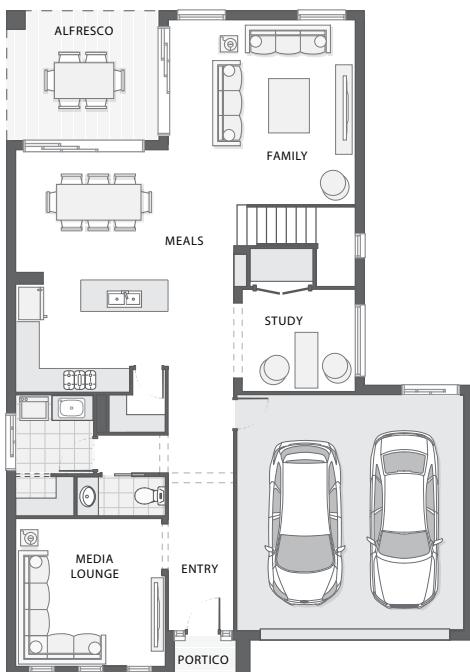
Minimum Lot Width	14.0m
Length	16.9m
Width	11.8m

## ROOM DIMENSIONS (m)

Meals	3.9 x 3.1
Family	4.7 x 4.6
Master Bedroom	3.8 x 4.3
Bedroom 2	3.0 x 3.0
Bedroom 3	3.0 x 3.0
Bedroom 4	3.0 x 3.0
Study	2.9 x 2.5
Media/Lounge	3.7 x 3.7
Retreat	5.0 x 4.6
Master Retreat	1.6 x 2.6
Alfresco	3.9 x 3.3

## FLOOR AREAS (m<sup>2</sup>)

Lower Living	115.2
Upper Living	129.8
Alfresco	12.8
Garage	38.7
Portico	1.7



# Available facade options for:

CAPESTONE, HADLEY, KERWIN, MERIDIAN, PATERSON, RICHMOND HOME DESIGNS



AMESBURY



BROOKLYN



HATTON



MARINA



MONTERAY



MORTON



CHADSTONE

This work is exclusively owned by AB Aust IP Pty Ltd (ACN 163 575 077) and cannot be reproduced or copied wholly or in part, in any form without the permission of AB Aust IP Pty Ltd. Plans and designs depicted may change with facade selection. Facade render is indicative and may change with home design. All drawings and images are for illustrative purposes only and rounding has been used. Any prices in this document include GST, relate only to the base home, do not include the supply of items such as landscaping and swimming pools and are subject to change. Minimum lot width is indicative only and is subject to local council regulations and setbacks, buyers should seek confirmation from their local council prior to making any decisions regarding home design on specific lots.

For more details on pricing, home and land packages in your area, inclusions and current offers, please talk to a consultant at one of our many display homes or visit our website, [adenbrookhomes.com.au](http://adenbrookhomes.com.au).

