

Indigo

OPTION A | 302m² (32.5sq)



The Indigo A home design is on trend, tasteful and well-appointed, creating the perfect sanctuary for the modern family.

The rear of the home is nothing but lifestyle and entertaining with a huge alfresco space spanning the width of the home that seamlessly blends with the internal hub of kitchen, dining and family rooms.

With the luxury of a media room and separate retreat, you are spoilt with multiple living zones and great separation. The lavish master retreat boasts his and her walk-in-robos and great separation from the other bedroom wing.

KEY DIMENSIONS

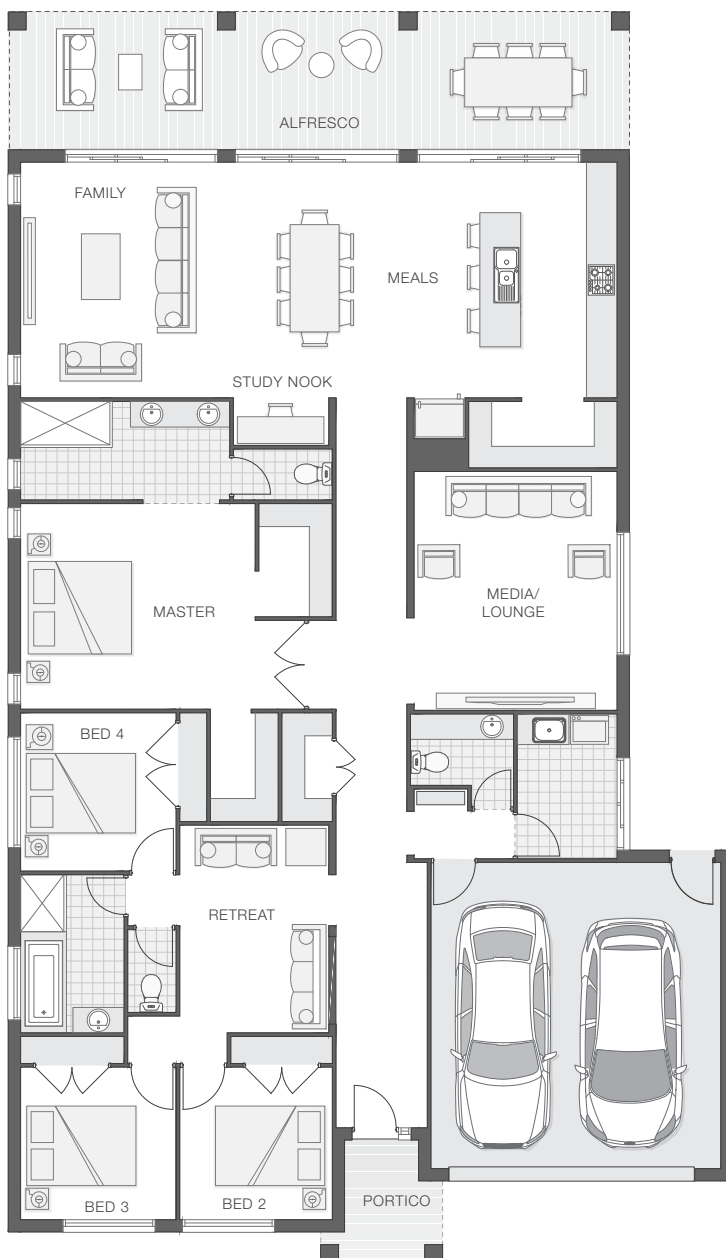
Minimum Lot Width	16.0m
Length	24.5m
Width	14.2m

ROOM DIMENSIONS (m)

Meals	3.9 x 4.6
Family	3.9 x 4.6
Master Bedroom	4.6 x 4.0
Bedroom 2	3.0 x 3.0
Bedroom 3	3.1 x 3.0
Bedroom 4	3.1 x 3.1
Study Nook	1.9 x 0.9
Media/Lounge	4.0 x 4.7
Retreat	2.9 x 4.1
Alfresco	12.2 x 2.7

FLOOR AREAS (m²)

Indoor Living	226.9
Alfresco	32.9
Garage	37.7
Portico	4.5



Available facade options for:

INDIGO HOME DESIGNS



This work is exclusively owned by AB Aust IP Pty Ltd (ACN 163 575 077) and cannot be reproduced or copied wholly or in part, in any form without the permission of AB Aust IP Pty Ltd. Plans and designs depicted may change with facade selection. Facade render is indicative and may change with home design. All drawings and images are for illustrative purposes only and rounding has been used. Any prices in this document include GST, relate only to the base home, do not include the supply of items such as landscaping and swimming pools and are subject to change. Minimum lot width is indicative only and is subject to local council regulations and setbacks, buyers should seek confirmation from their local council prior to making any decisions regarding home design on specific lots.

For more details on pricing, home and land packages in your area, inclusions and current offers, please talk to a consultant at one of our many display homes or visit our website, adenbrookhomes.com.au.



adenbrook
homes