

Isla

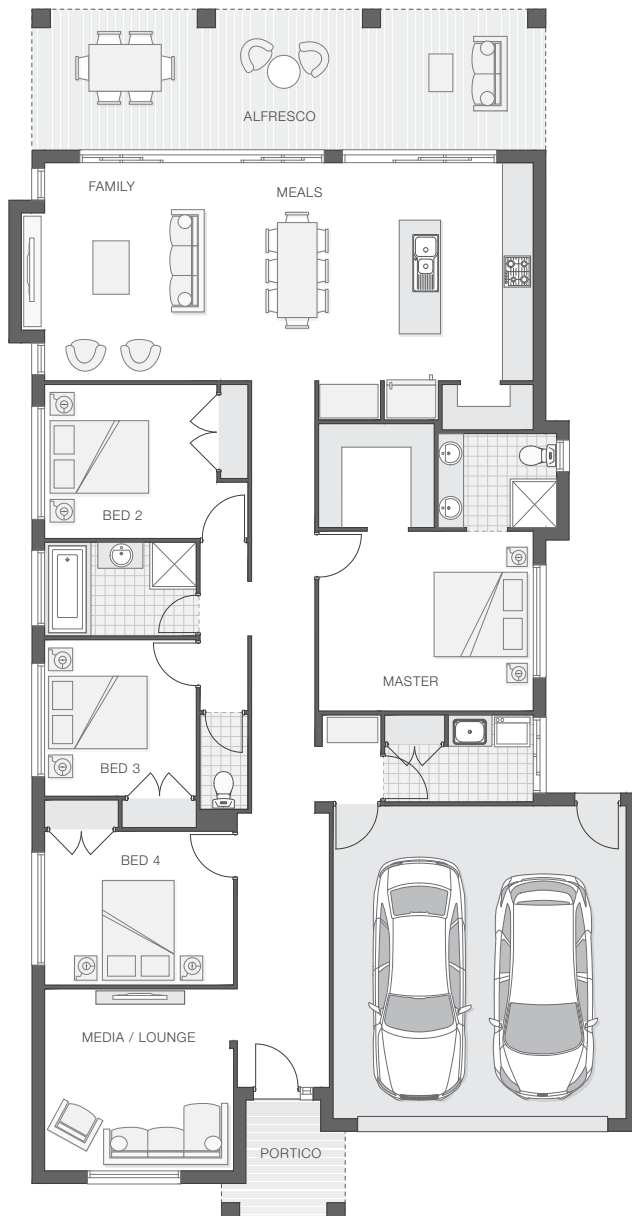
OPTION B | 235.8m² (25.4sq)



The Isla B home design is sophisticated and stylish, offering all the modern features that you need to relax, entertain and enjoy!

Running the entire width of the home, the outdoor entertaining area flawlessly integrates with the family room, meals area and generous kitchen complete with butler's pantry creating an oversized entertainers delight.

The centrally located master retreat boasts an ensuite and large walk-in-robe while three additional bedrooms and a dedicated media/lounge and tech zone complete this beautiful home.



KEY DIMENSIONS

Minimum Lot Width	14.0m
Length	23.2m
Width	12.2m

ROOM DIMENSIONS (m)

Meals	2.8 x 3.3
Family	4.0 x 4.2
Master Bedroom	4.2 x 3.5
Bedroom 2	3.4 x 3.0
Bedroom 3	3.0 x 3.0
Bedroom 4	3.7 x 3.0
Media/Lounge	3.7 x 3.5
Alfresco	10.0 x 2.7

FLOOR AREAS (m²)

Indoor Living	166.9
Alfresco	26.9
Garage	37.6
Portico	4.5

Available facade options for:

ISLA HOME DESIGNS



This work is exclusively owned by AB Aust IP Pty Ltd (ACN 163 575 077) and cannot be reproduced or copied wholly or in part, in any form without the permission of AB Aust IP Pty Ltd. Plans and designs depicted may change with facade selection. Facade render is indicative and may change with home design. All drawings and images are for illustrative purposes only and rounding has been used. Any prices in this document include GST, relate only to the base home, do not include the supply of items such as landscaping and swimming pools and are subject to change. Minimum lot width is indicative only and is subject to local council regulations and setbacks, buyers should seek confirmation from their local council prior to making any decisions regarding home design on specific lots.

For more details on pricing, home and land packages in your area, inclusions and current offers, please talk to a consultant at one of our many display homes or visit our website, adenbrookhomes.com.au.