

Keppel

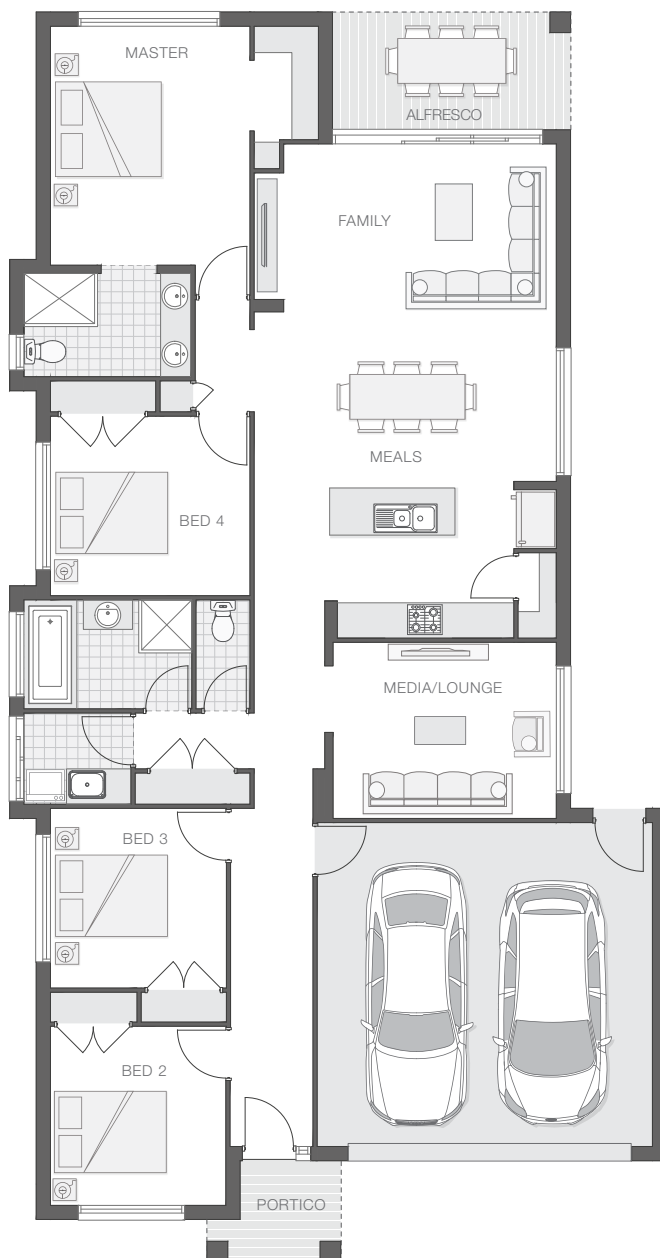
OPTION A (NSW) | 196.1m² (21.1sq)



The Keppel home design is modern and meticulous with attention to detail at every turn.

The design essentially separates the home into individual zones to provide privacy and tranquillity while also accommodating entertainment and family living.

The hub of this home is the chefs style kitchen with walk-in-pantry and living space that is fringed by the alfresco at one end and media or family room at the other. The bedrooms are spread across the opposing side of the house creating great separation and easy flow throughout the home.



KEY DIMENSIONS

Minimum Lot Width	12.5m
Length	21.2m
Width	11.1m

ROOM DIMENSIONS (m)

Meals	3.9 x 2.7
Family	4.6 x 3.0
Master Bedroom	3.4 x 4.1
Bedroom 2	3.0 x 3.1
Bedroom 3	3.0 x 3.1
Bedroom 4	3.4 x 3.1
Media/Lounge	3.8 x 3.0
Alfresco	4.0 x 2.0

FLOOR AREAS (m²)

Indoor Living	150.4
Alfresco	8.1
Garage	34.4
Portico	3.3



Available facade options for:

KEPPEL HOME DESIGNS



ARDEN



BEXLEY



BYRON



HAVEN



KARIN



TAYLOR

This work is exclusively owned by AB Aust IP Pty Ltd (ACN 163 575 077) and cannot be reproduced or copied wholly or in part, in any form without the permission of AB Aust IP Pty Ltd. Plans and designs depicted may change with facade selection. Facade render is indicative and may change with home design. All drawings and images are for illustrative purposes only and rounding has been used. Any prices in this document include GST, relate only to the base home, do not include the supply of items such as landscaping and swimming pools and are subject to change. Minimum lot width is indicative only and is subject to local council regulations and setbacks, buyers should seek confirmation from their local council prior to making any decisions regarding home design on specific lots.

For more details on pricing, home and land packages in your area, inclusions and current offers, please talk to a consultant at one of our many display homes or visit our website, adenbrookhomes.com.au.