

adenbrookhomes

The Levi A

ON DISPLAY WITH PALERMO FACADE

29 SATURN STREET, LEPPINGTON NSW 2179



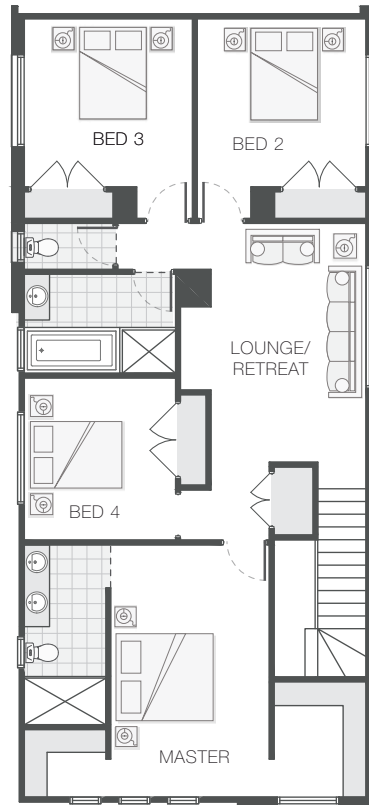
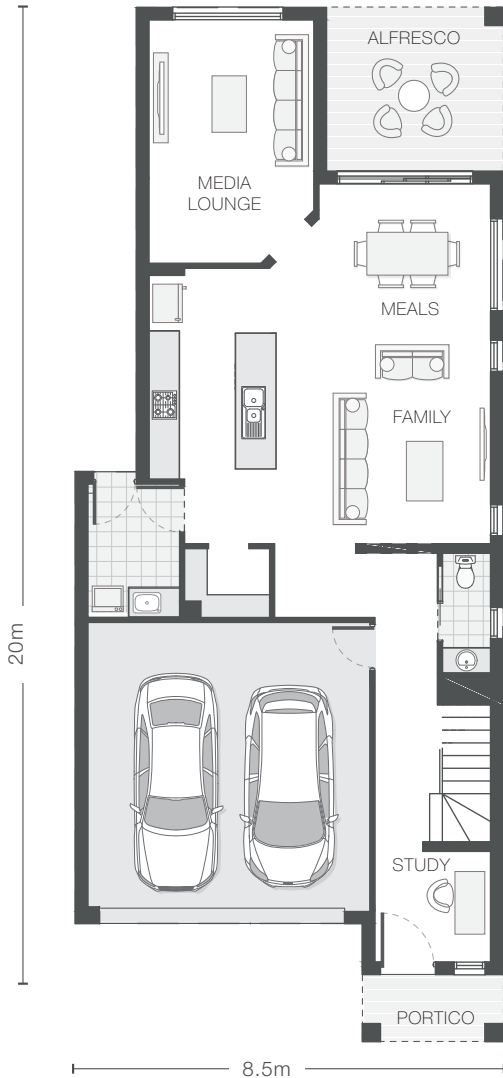
The Levi A | Home on Display

The Levi is a beautiful family home design with generous inclusions cleverly spread over two levels but perfect for a smaller lot. The lower level is designed for living, with a large meals area and alfresco plus a walk-in pantry and study. A separate media room off the main living area gives the lower level a touch of luxury and sophistication and provides privacy and seclusion. The upper level has 4 bedrooms, including a master retreat complete with ensuite, 2 walk-in-robos and separate sitting area, which is ideal as a retreat for the growing family. Completing the second level floor plan is a full bathroom with separate WC.



The Levi A

Home on Display with Palermo Facade 258.9m² | 27.9sq



UPGRADE OPTIONS ON DISPLAY

- Freestanding bath to main bathroom
- Subway tiles to bathrooms
- Built in TV cabinetry to 1st floor sitting
- Clark Matte black tapware & Gainsborough door hardware
- Shaker profile kitchen cabinetry
- Open shelving to kitchen with encaustic tile feature
- Westinghouse 900mm freestanding oven
- Turner Hastings Farm Sink & Dorf pull down mixer
- Easycraft VJ Panelling feature walls
- Overhead cabinetry to Laundry

KEY DIMENSIONS

Minimum Lot Width	10.0m
Length	20.3m
Width	8.5m

ROOM DIMENSIONS (m)

Meals	3.4 x 3.6
Family	3.6 x 4.2
Master Bedroom	3.1 x 5.0
Bedroom 2	3.3 x 3.3
Bedroom 3	3.3 x 3.3
Bedroom 4	3.0 x 3.2
Media/Lounge	3.2 x 4.8
Alfresco	3.5 x 3.2
Study	2.3 x 2.2
Childs Retreat	3.1 x 4.7

FLOOR AREAS (m²)

Lower Living	98.16
Upper Living	111.24
Alfresco	11.33
Garage	34.47
Portico	3.70

This display includes lifestyle options which highlight features in the design. Speak with a consultant about how you can customise the base plan to suit your lifestyle.

adenbrookhomes