

Macleay

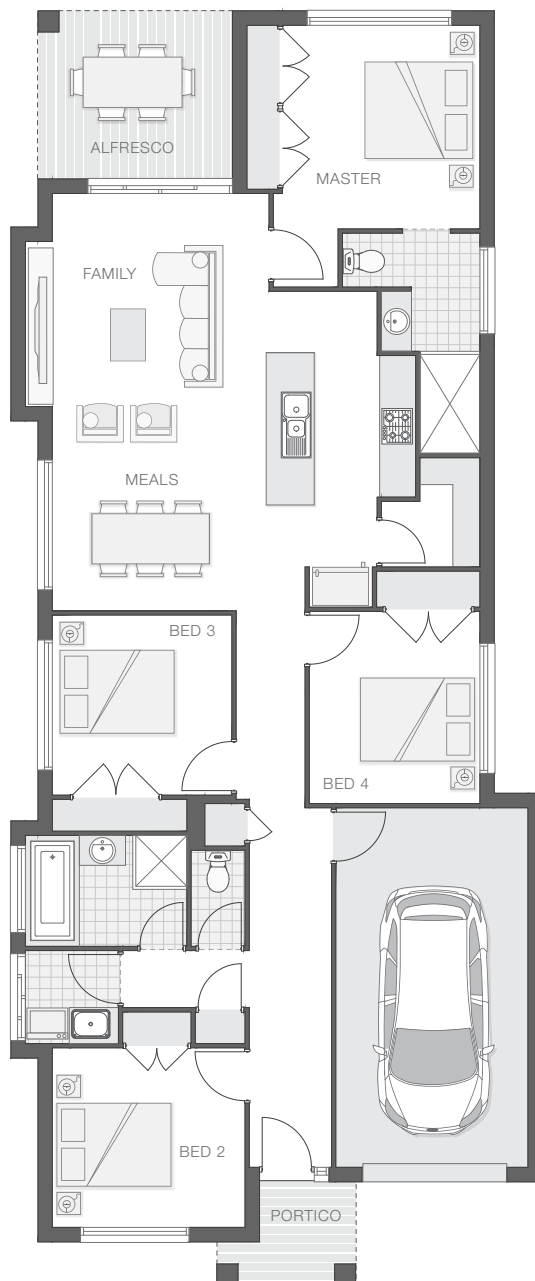
STANDARD DESIGN | 163.5m² (17.6sq)



The Macleay home design is intended to suit a small lot yet not compromise on delivering everything you would come to expect from a modern family home.

Cleverly integrating the alfresco area with the open plan living and kitchen zones creates a generous space that is ideal for entertaining year round.

The master retreat adds a touch of extravagance while the children's zone offers space and privacy for the entire family. While it may be compact, the Macleay is also clever and classy.



KEY DIMENSIONS

Minimum Lot Width	10.0m
Length	21.2m
Width	8.9m

ROOM DIMENSIONS (m)

Meals	3.1 x 2.7
Family	3.6 x 4.3
Master Bedroom	3.3 x 3.4
Bedroom 2	3.0 x 3.2
Bedroom 3	3.0 x 3.0
Bedroom 4	2.9 x 3.2
Alfresco	3.2 x 2.8

FLOOR AREAS (m²)

Indoor Living	129.7
Alfresco	9.1
Garage	21.6
Portico	3.3



Available facade options for:

MACLEAY HOME DESIGN



ARDEN



BEXLEY



BYRON



HAVEN



KARIN



TAYLOR

This work is exclusively owned by AB Aust IP Pty Ltd (ACN 163 575 077) and cannot be reproduced or copied wholly or in part, in any form without the permission of AB Aust IP Pty Ltd. Plans and designs depicted may change with facade selection. Facade render is indicative and may change with home design. All drawings and images are for illustrative purposes only and rounding has been used. Any prices in this document include GST, relate only to the base home, do not include the supply of items such as landscaping and swimming pools and are subject to change. Minimum lot width is indicative only and is subject to local council regulations and setbacks, buyers should seek confirmation from their local council prior to making any decisions regarding home design on specific lots.

For more details on pricing, home and land packages in your area, inclusions and current offers, please talk to a consultant at one of our many display homes or visit our website, adenbrookhomes.com.au.

adenbrook
homes