

Maya

STANDARD | 225.68m² (24.3sq)



MARINA FACADE

4 2 2

The Maya home design is fresh and vibrant and provides a stylish family home suitable for a sloping block. The entertaining zone presents an alfresco space that effortlessly integrates with the kitchen, family room and meals zones providing the ideal location for celebrations, relaxation and family dining all year round.

The generously proportioned master retreat offers an ensuite and walk-in-robe. The Maya boasts separate living zones and communal areas that afford modern family living in comfort and style.

KEY DIMENSIONS

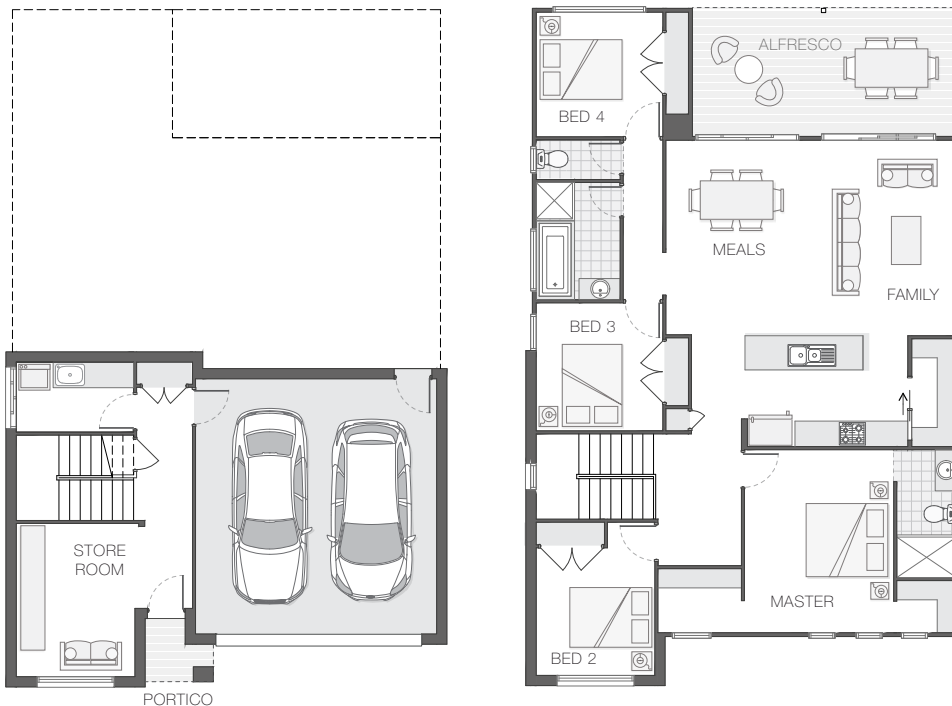
Minimum Lot Width	13.0m
Length	15.9m
Width	10.3m

ROOM DIMENSIONS (m)

Meals	4.6 x 3.2
Family	4.6 x 3.6
Master Bedroom	4.3 x 3.5
Bedroom 2	3.0 x 2.8
Bedroom 3	3.0 x 3.0
Bedroom 4	2.9 x 3.0
Alfresco	3.0 x 6.3
Store Room	3.6 x 2.8

FLOOR AREAS (m²)

Lower Living	32.9
Upper Living	133.5
Alfresco	18.9
Garage	38.3
Portico	2.1



Available facade options for:

MAYA HOME DESIGN



MARLOW



MARINA



ALLARA



AMESBURY

This work is exclusively owned by AB Aust IP Pty Ltd (ACN 163 575 077) and cannot be reproduced or copied wholly or in part, in any form without the permission of AB Aust IP Pty Ltd. Plans and designs depicted may change with facade selection. Facade render is indicative and may change with home design. All drawings and images are for illustrative purposes only and rounding has been used. Any prices in this document include GST, relate only to the base home, do not include the supply of items such as landscaping and swimming pools and are subject to change. Minimum lot width is indicative only and is subject to local council regulations and setbacks, buyers should seek confirmation from their local council prior to making any decisions regarding home design on specific lots.

For more details on pricing, home and land packages in your area, inclusions and current offers, please talk to a consultant at one of our many display homes or visit our website, adenbrookhomes.com.au.