

Willow

OPTION MK2 | 178.7m² (19.2sq)

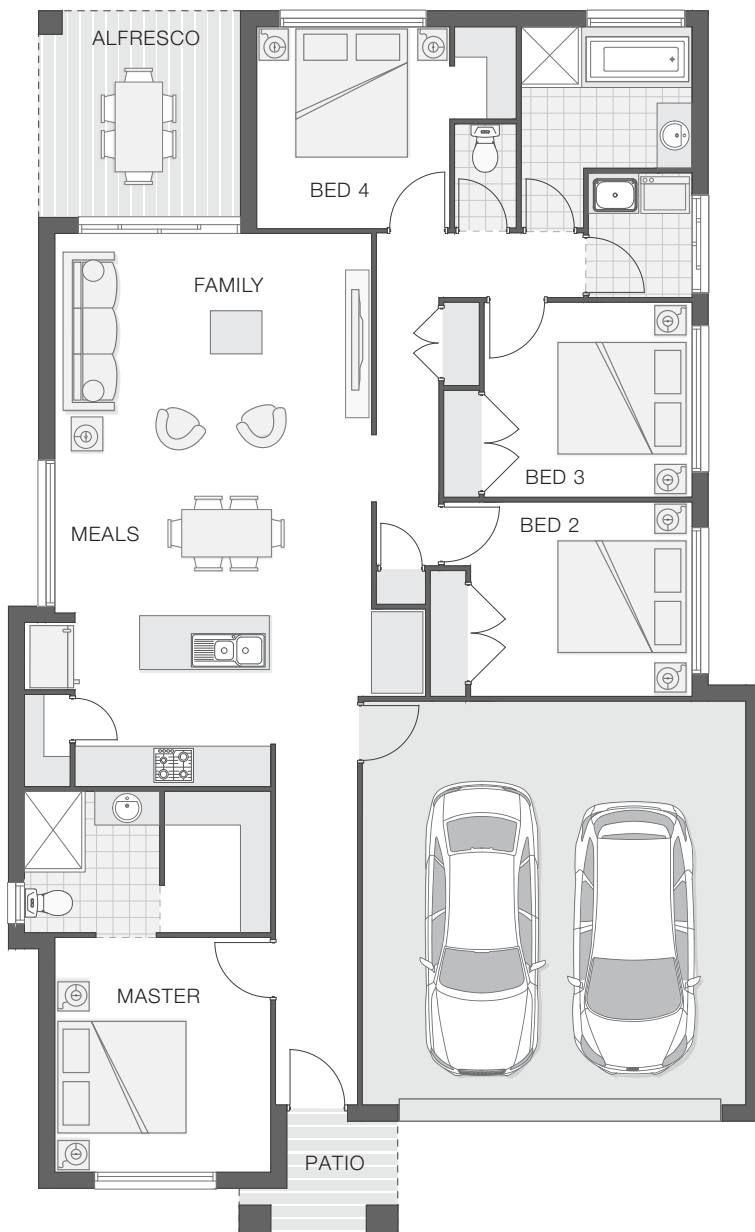


4 2 2

The Willow MK2 home design is popular and practical for the modern family that loves to entertain and enjoy each other's company.

The light and bright open plan design provides a great entertaining space within the hub of the home that incorporates the alfresco area, the kitchen and family room and meals zones.

The generous master retreat enjoys an ensuite and walk-in-robe while the children's wing provides great separation and is ideal for creating a safe and secure area for the kids.



KEY DIMENSIONS

Minimum Lot Width	12.5m
Length	18.2m
Width	11.2m

ROOM DIMENSIONS (m)

Meals	3.2 x 2.3
Family	3.2 x 3.4
Master Bedroom	3.2 x 3.5
Bedroom 2	3.3 x 2.9
Bedroom 3	3.1 x 2.9
Bedroom 4	2.9 x 3.0
Alfresco	3.0 x 3.1

FLOOR AREAS (m²)

Indoor Living	129.0
Alfresco	9.2
Garage	37.1
Portico	3.4

Available facade options for:

WILLOW HOME DESIGNS



ARDEN



BEXLEY



BYRON



HAVEN



KARIN



TAYLOR

This work is exclusively owned by AB Aust IP Pty Ltd (ACN 163 575 077) and cannot be reproduced or copied wholly or in part, in any form without the permission of AB Aust IP Pty Ltd. Plans and designs depicted may change with facade selection. Facade render is indicative and may change with home design. All drawings and images are for illustrative purposes only and rounding has been used. Any prices in this document include GST, relate only to the base home, do not include the supply of items such as landscaping and swimming pools and are subject to change. Minimum lot width is indicative only and is subject to local council regulations and setbacks, buyers should seek confirmation from their local council prior to making any decisions regarding home design on specific lots.

For more details on pricing, home and land packages in your area, inclusions and current offers, please talk to a consultant at one of our many display homes or visit our website, adenbrookhomes.com.au.